

#### OUTDOOR HEATED AND INSULATED HYDRANT, FOR WALL-MOUNTED WITH PLACE FOR AN EXTINGUISHER

For outdoor use in cold conditions up to  $-25^{\circ}$ . Thermostatically controlled heating unit and insulation secure cabinet interior against cold.

#### Dimensions (width x height x depth) [mm]:

795x1040x290 (For wall-mounting - N)

#### Version:

- For wall-mounting

#### Implementation:

- Cabinet heated and insulated, made of low carbon steel DC01 with a thickness of min. 1 mm, painted RAL3000 (red) or RAL9010 (white), thickness of layer min.  $80\text{ }\mu\text{m}$
- Inlet holes as knockouts  $\varnothing 72\text{ mm}$ , 6 connection possibilities
- Insulated hydrant cabinet door with a hinge that allows the door to be opened 180 degrees and a plate that protects the insulation against damage
- Anti-corrosion protection-iron phosphating, epoxy-polyester paint
- Hydrant cabinet insulated with thermal conductivity coefficient insulation material 0,042 W/mk
- 150W/230V thermostatically controlled heating element, IP65 level
- Automatic regulation of the hydrant interior temperature according to the thermostat settings
- Model in a vertical arrangement with additional room for a 6 kg extinguisher

#### Lack type:

- Pull lock to close the door to the body seal

#### Equipment:

- Self-locking hose reel for semi-rigid hose, full disc, powder coated, color RAL 3000 (red), gloss 80%, thickness of layer min.  $80\text{ }\mu\text{m}$
- Brass water axis
- Ball valve brass DN32 (1 1/4")
- Brass fire-hose nozzle GRAS DN33/D12
- Semi-rigid fire hose DN32 (20 m or 30 m) according to EN-694 norm for fire hoses
- Connection hose (for connection valve-hose reel) to valve DN32 (1 1/4")

#### Working pressure:

- Minimum: 0.2 MPa - maximum: 0.7 MPa

#### Efficiency:

- $P \geq 0.2\text{ MPa}$  - WSP K = 64,5 nozzle D12 mm / Q Nom = 91l/min
- $P \geq 0.4\text{ MPa}$  - WSP K = 64,5 nozzle D12 mm / Q Nom = 131l/min
- $P \geq 0.6\text{ MPa}$  - WSP K = 64,5 nozzle D12 mm / Q Nom = 160l/min

#### Marking and documentation:

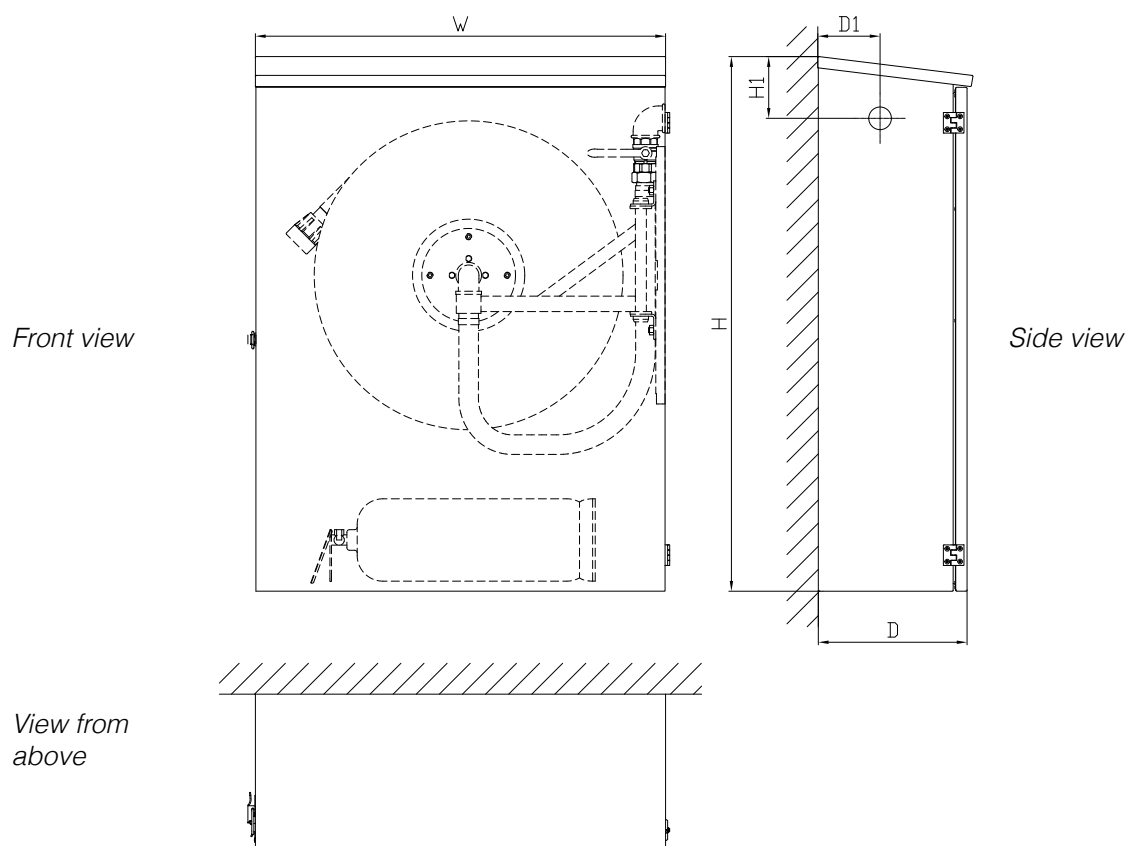
- Installation instructions
- Marking acc. to EN 671
- The declaration of performance

#### Conformity to standards and certificates:

- EN 671-1
- EC (CE) certificate of conformity no: 1438/CPR/0227

#### Options:

- Other cabinet RAL color\_\_\_\_\_
- Cabinet made of stainless steel 304 or 316L
- Cabinet made in accordance to EN 12944 - corrosion protection level C5
- Adjustable support legs for freestanding installation on the floor
- Support frame for installation perpendicularly to the wall
- Extinguisher (for 4kg or 6kg powder type)



Model	Version	Frame	Hose length [m]		Dimensions [mm]					
			DN32	W	W1	H	H1	D	D1	
HWG-33N-KP-20/30 HS-Z	For wall-mounting	-	20 or 30	795	80	1040	120	290	120	