



CABINET G-120
Fire blanket cabinet

Dimensions (width x height x depth) [mm]:

300x300x150

Version:

- For wall-mounting

Implementation:

- Cabinet made of low carbon steel, electrolytically galvanized DC01 with a thickness of min. 0,6 mm, painted RAL3000 (red) or RAL9010 (white), thickness of layer min. 80 μ m
- Corrosion protection - zinc coating with a thickness of min. 3 μ m on side, iron phosphating, epoxy polyester paint

Lack type:

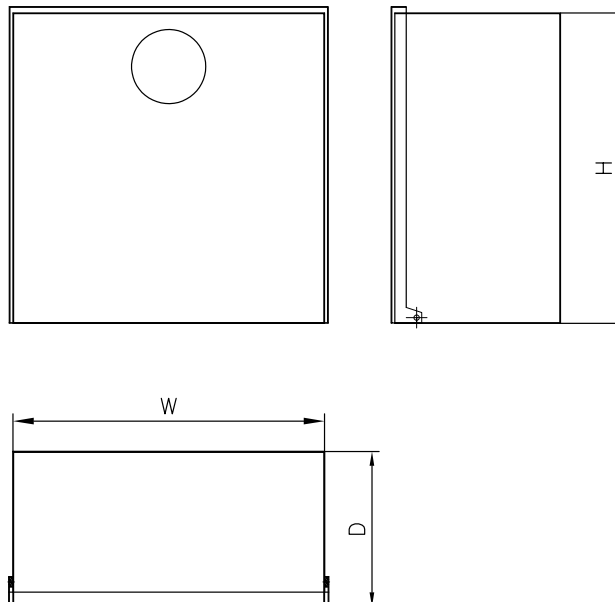
- EURO - rotating, recessed door handle

Options:

- Other cabinet RAL color _____
- Cabinet made of stainless steel 304 or 316L

Equipment (optional):

- Fire blanket



Model	Version	Dimensions (width x height x depth) [mm]:		
		W	H	D
G-120	Natynkowa	300	300	150