

GRAS**PRESTIGE**LINE

THE INSPIRATIONS



GRAS**PRESTIGELINE**

THE INSPIRATIONS

The Inspirations Catalogue is a fascinating vision of something that moves our desires and motivation for a life in the dream environment. It is the realization of passion of inventive solutions which touches our minds and emotions. We cause that such a prosaic product, which a hydrant box is, can add wings of imagination and taste to your everyday life and can free optimism and effective power of creation.

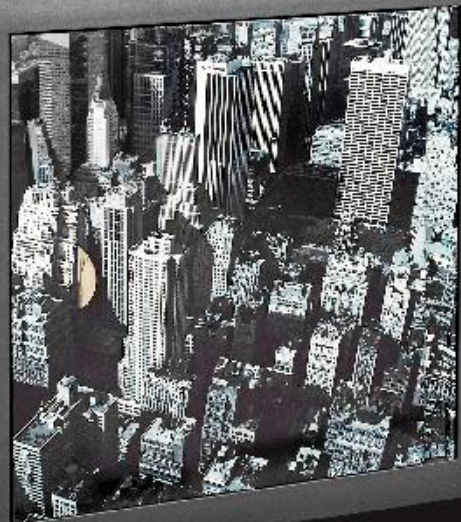


THE INDOOR FIRE HYDRANTS DN19, DN25

METROPOLIS

*The lights are going out
You are sailing in
The ocean of
Industrial dreams*

MODEL PICTURE







P001



P002



P003



P004



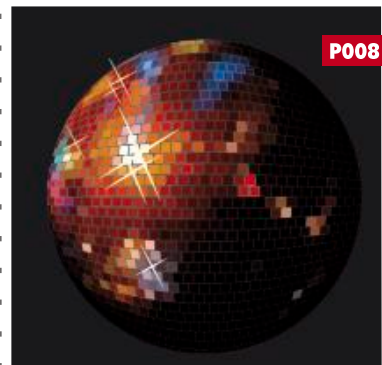
P005



P006



P007



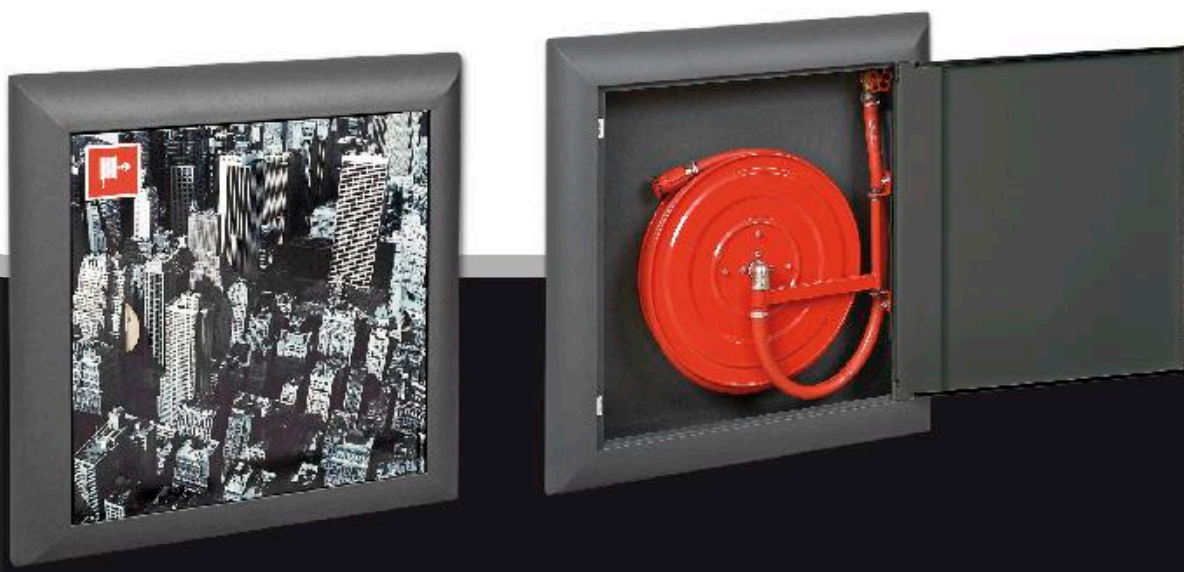
P008

Demonstration graphics.

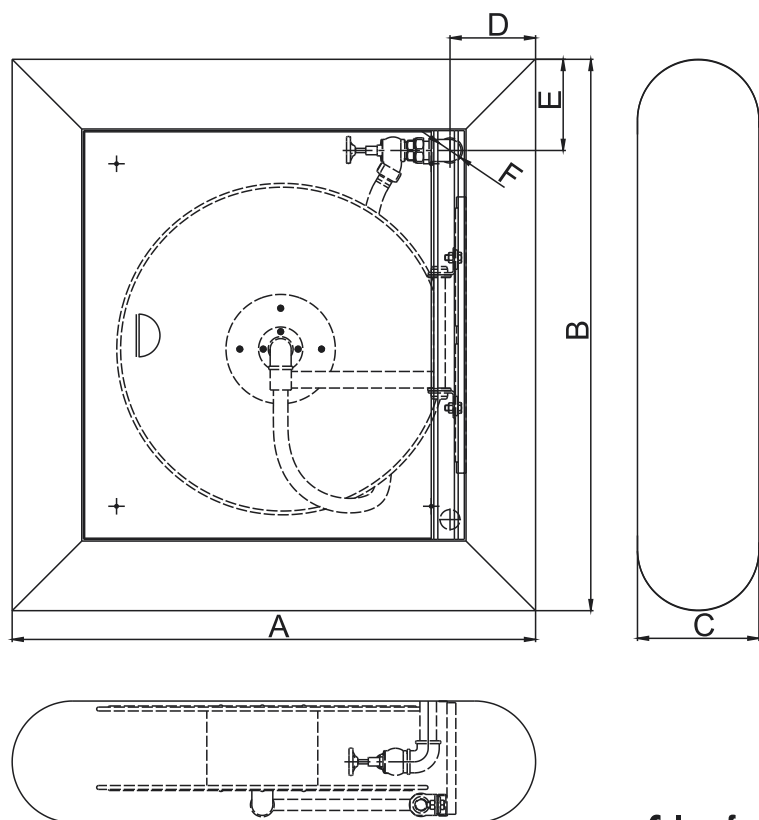
The indoor hydrant HW-19/25N-20/30 PICTURE

The photograph, a reproduction of work of art – whatever you will dream about, it will embellish your interior by giving it an individual character. It is enough if you let us place your idea within frames of the hydrant cabinet.

The presented graphics are only a proposition. A body of the cabinet can be lacquered with any matt color within the RAL palette.



HW-19N-20/30 PICTURE
HW-25N-20/30 PICTURE



Model PICTURE

Type: HW-19N-20/30 and HW-25N-20/30

The indoor hydrant for a semi-rigid hose DN19 or DN25.

Sort: suspended (wall-mounted) "N".

Connection of water supply: back of cabinet.

Sort of lock: magnetic.

Color of cabinet's body: any matt lacquer within the RAL palette.

Cabinet's material: electrolytically galvanized steel.

Working pressure: minimum: 0.2 MPa, maximum: 1.2 MPa.

Output: (Q Nom = 60 l/min for DN25 model):

$P \geq 0.2$ MPa coefficient $K = 44$ ($\varnothing 10$ mm fire hose nozzle).

$P \geq 0.4$ MPa coefficient $K = 30.5$ ($\varnothing 8$ mm fire hose nozzle).

$P \geq 0.6$ MPa coefficient $K = 26$ ($\varnothing 6$ mm fire hose nozzle).

The hydrant can be in a version of horizontal arrangement for an extinguisher.

Conformity to the norms:

EN 671-1.

Certificates:

EC Certificate of Conformity No. 1438/CPD/004,

EC Certificate of Conformity No. 1438/CPD/0063.

MODEL	width	height	depth	dimensions			hose type	valve	reel diametres [mm]	hose length [m]
	A [mm]	B [mm]	C [mm]	D [mm]	E [mm]	F [mm]				
HW-19N-20 PICTURE	900	950	170	130	140	72	Light (white)/rubber (black)	1"	500	20
HW-19N-30 PICTURE	900	950	170	130	140	72	Light (white)/rubber (black)	1"	600	30
HW-25N-20 PICTURE	950	1000	220	155	165	72	Light (white)	1"	500	20
HW-25N-20 PICTURE	950	1000	220	155	165	72	Rubber (black)	1"	600	20
HW-25N-30 PICTURE	950	1000	220	155	165	72	Light (white)	1"	600	30
HW-25N-30 PICTURE	980	1030	250	155	165	72	Rubber (black)	1"	600	30
HW-25N-20 PICTURE	950	1050	220	180	190	90	Light (white)	2"	500	20
HW-25N-20 PICTURE	950	1050	220	180	190	90	Rubber (black)	2"	600	20
HW-25N-30 PICTURE	950	1050	220	180	190	90	Light (white)	2"	600	30
HW-25N-30 PICTURE	980	1150	250	180	190	90	Rubber (black)	2"	600	30



DRA CULA



*Hardens
Unlimited
Space of solace
In a ruby drop*

MODEL LEATHER





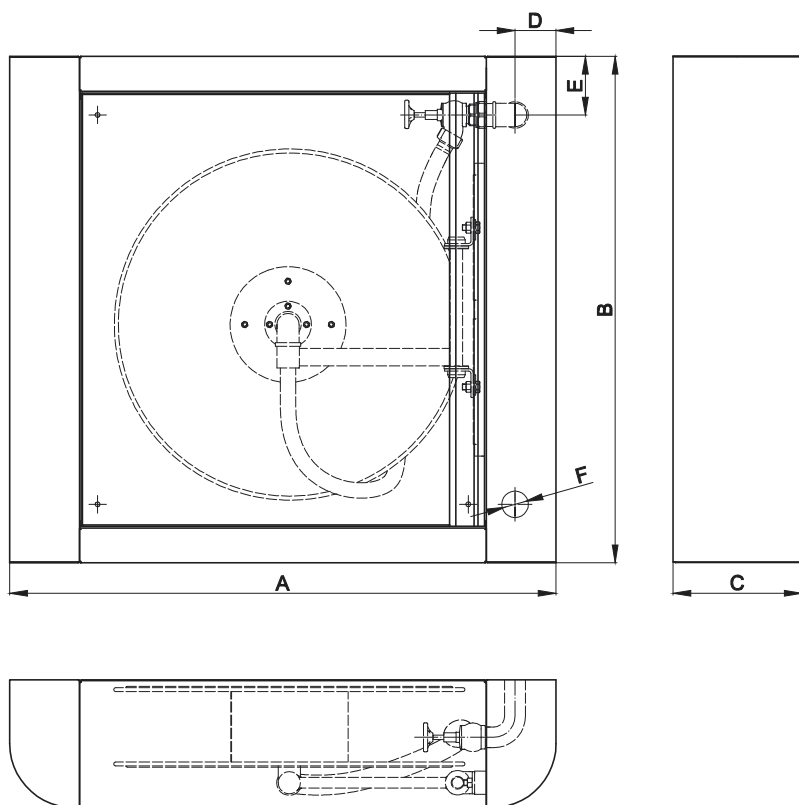
Demonstration colors of leather dyeing.

The indoor hydrant HW-19/25N-20/30 LEATHER

An ideal complement of a study interior. The cabinet covered with the leather of 0.8 mm in thickness, which may be of cowhide, furniture, crumpled, chrome tanned, thoroughly dye penetrated with red color, covered with a finish in black. Possible other colors of leather dyeing. An interior of body covered with paint of any color within the RAL palette.



HW-19N-20/30 LEATHER
HW-25N-20/30 LEATHER



Model LEATHER

Type: HW-19N-20/30 and HW-25N-20/30

The indoor hydrant for a semi-rigid hose DN19 or DN25.

Sort: suspended (wall-mounted) "N".

Connection of water supply: back of cabinet.

Sort of lock: magnetic.

Color of cabinet's body: any within the RAL palette.

Cabinet's material: electrolytically galvanized steel.

Working pressure: minimum: 0.2 MPa.
maximum: 1.2 MPa.

Output: (Q Nom = 60 l/min for DN25 model):
 $P \geq 0.2$ MPa coefficient $K = 44$ ($\varnothing 10$ mm fire hose nozzle).
 $P \geq 0.4$ MPa coefficient $K = 30.5$ ($\varnothing 8$ mm fire hose nozzle).
 $P \geq 0.6$ MPa coefficient $K = 26$ ($\varnothing 6$ mm fire hose nozzle).

Conformity to the norms:

EN 671-1.

Certificates:

EC Certificate of Conformity No. 1438/CPD/004,
EC Certificate of Conformity No. 1438/CPD/0063.

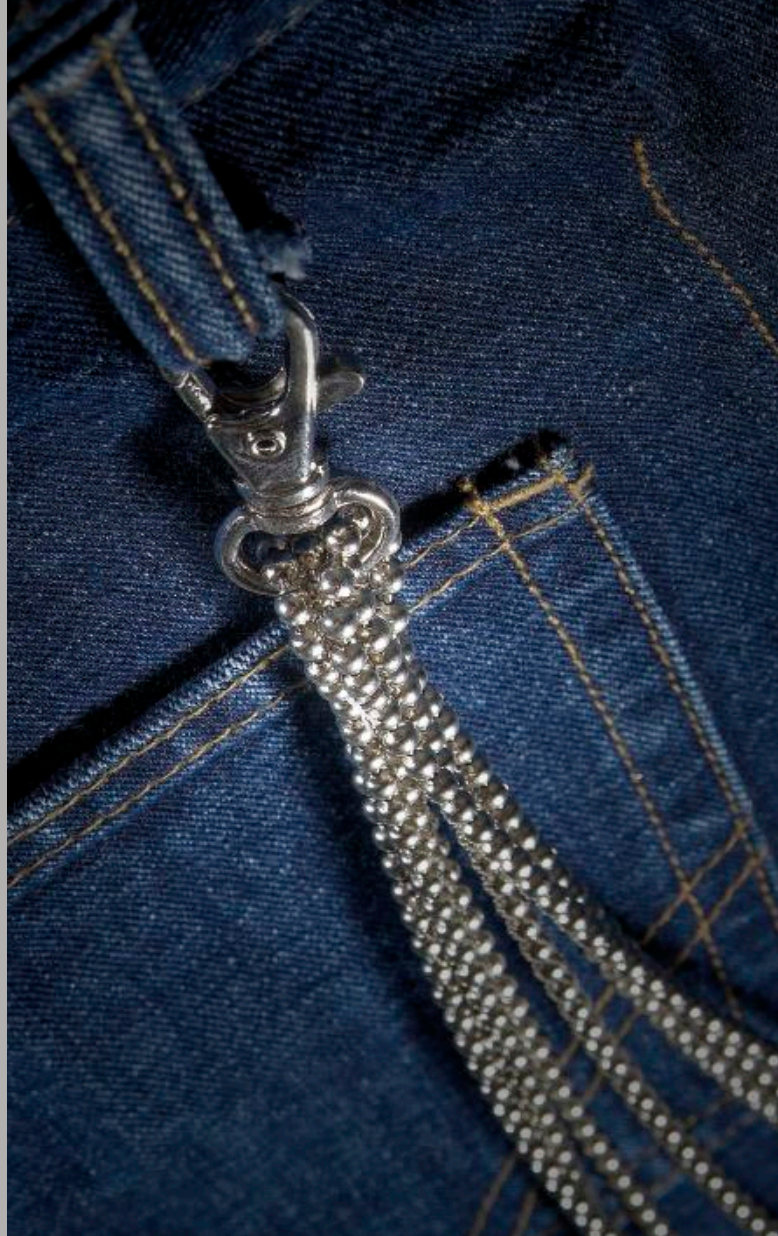
MODEL	width	height	depth	dimensions			hose type	valve	reel diametres [mm]	hose length [m]
	A [mm]	B [mm]	C [mm]	D [mm]	E [mm]	F [mm]				
HW-19N-20 LEATHER	930	865	180	70	100	36	Light (white)/rubber (black)	1"	500	20
HW-19N-30 LEATHER	930	865	180	70	100	36	Light (white)/rubber (black)	1"	600	30
HW-25N-20 LEATHER	930	865	220	70	100	36	Light (white)	1"	500	20
HW-25N-20 LEATHER	930	865	220	70	100	36	Rubber (black)	1"	600	20
HW-25N-30 LEATHER	930	865	220	70	100	36	Light (white)	1"	600	30
HW-25N-30 LEATHER	930	865	250	70	100	36	Rubber (black)	1"	600	30
HW-25N-20 LEATHER	930	915	250	70	100	72	Light (white)	2"	500	20
HW-25N-20 LEATHER	930	915	250	70	100	72	Rubber (black)	2"	500	20
HW-25N-30 LEATHER	930	915	250	70	100	72	Light (white)	2"	500	30
HW-25N-30 LEATHER	930	915	250	70	100	72	Rubber (black)	2"	600	30

THE BIG BLUE

*Freedom
Wind net
Entwined
Into waves' plaits*

MODEL JEANS







Demonstration colors of fabric.

The indoor hydrant HW-19/25N-20/30 JEANS

The unique character that is given to a hydrant cabinet by the jeans makes it an ideal solution for rooms and shops selling clothes.

The hydrant cabinet covered with jeans fabric and metal ornaments.

The handmade product made with the highest care and quality.

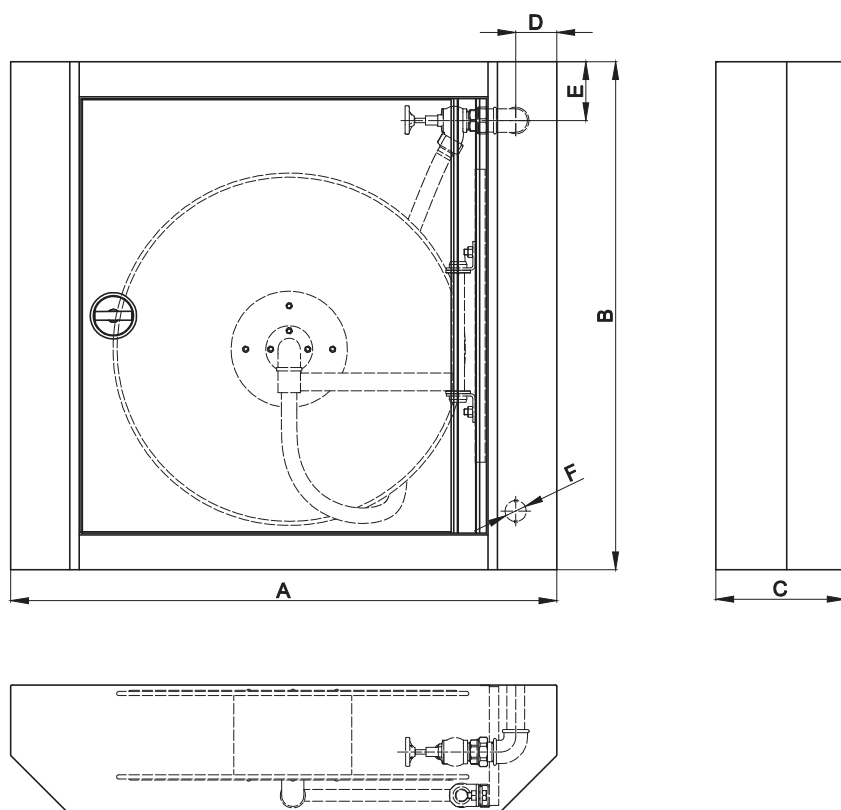
There is the possibility of changing the jeans' color.

The producer does not guarantee a repeatability of the veneer pattern.



HW-19N-20/30 JEANS

HW-25N-20/30 JEANS



Model JEANS

Type: HW-19N-20/30 and HW-25N-20/30

The indoor hydrant for a semi-rigid hose DN19 or DN25.

Sort: suspended (wall-mounted) "N".

Connection of water supply: back of cabinet.

Sort of lock: magnetic or Euro – rotating, recessed door handle.

Color of fabric: subject to a chosen fabric color (blue as standard).

Cabinet's material: electrolytically galvanized steel.

Working pressure: minimum: 0.2 MPa.
maximum: 1.2 MPa.

Output: (Q Nom = 60 l/min for DN25 model):
 $P \geq 0.2$ MPa coefficient $K = 44$ ($\varnothing 10$ mm fire hose nozzle).
 $P \geq 0.4$ MPa coefficient $K = 30.5$ ($\varnothing 8$ mm fire hose nozzle).
 $P \geq 0.6$ MPa coefficient $K = 26$ ($\varnothing 6$ mm fire hose nozzle).

The hydrant can be in a version of horizontal arrangement for an extinguisher.

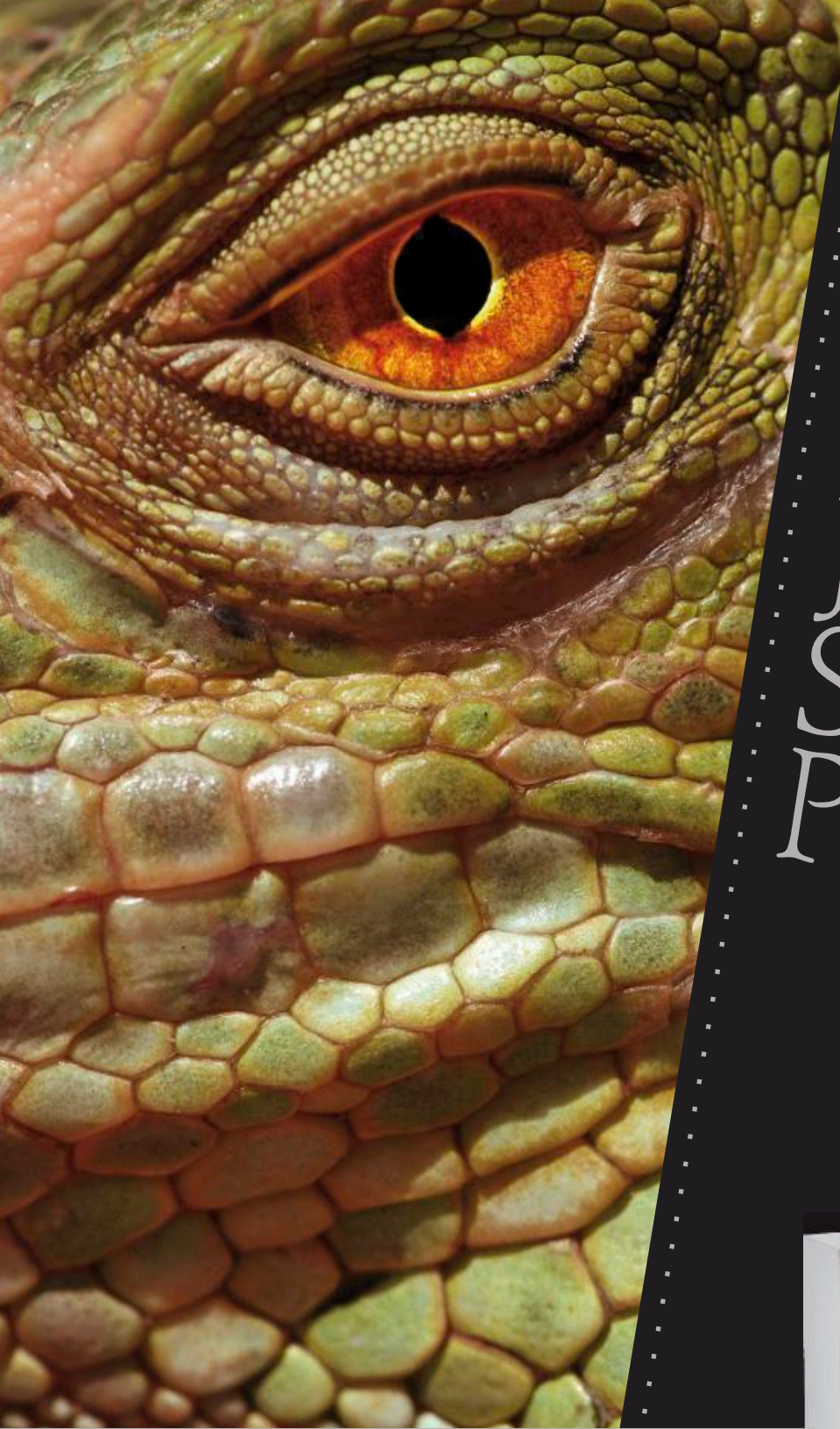
Conformity to the norms:

EN 671-1.

Certificates:

EC Certificate of Conformity No. 1438/CPD/004,
EC Certificate of Conformity No. 1438/CPD/0063.

MODEL	width	height	depth	dimensions			hose type	valve	reel diametres [mm]	hose length [m]
	A [mm]	B [mm]	C [mm]	D [mm]	E [mm]	F [mm]				
HW-19N-20 JEANS	930	865	170	70	100	72	Light (white)/rubber (black)	1"	500	20
HW-19N-30 JEANS	930	865	170	70	100	72	Light (white)/rubber (black)	1"	600	30
HW-25N-20 JEANS	930	865	220	70	100	72	Light (white)	1"	500	20
HW-25N-20 JEANS	930	865	220	70	100	72	Rubber (black)	1"	600	20
HW-25N-30 JEANS	930	865	220	70	100	72	Light (white)	1"	600	30
HW-25N-30 JEANS	930	865	250	70	100	72	Rubber (black)	1"	600	30
HW-25N-20 JEANS	930	915	250	70	100	90	Light (white)	2"	500	20
HW-25N-20 JEANS	930	915	250	70	100	90	Rubber (black)	2"	500	20
HW-25N-30 JEANS	930	915	250	70	100	90	Light (white)	2"	500	30
HW-25N-30 JEANS	930	915	250	70	100	90	Rubber (black)	2"	600	30

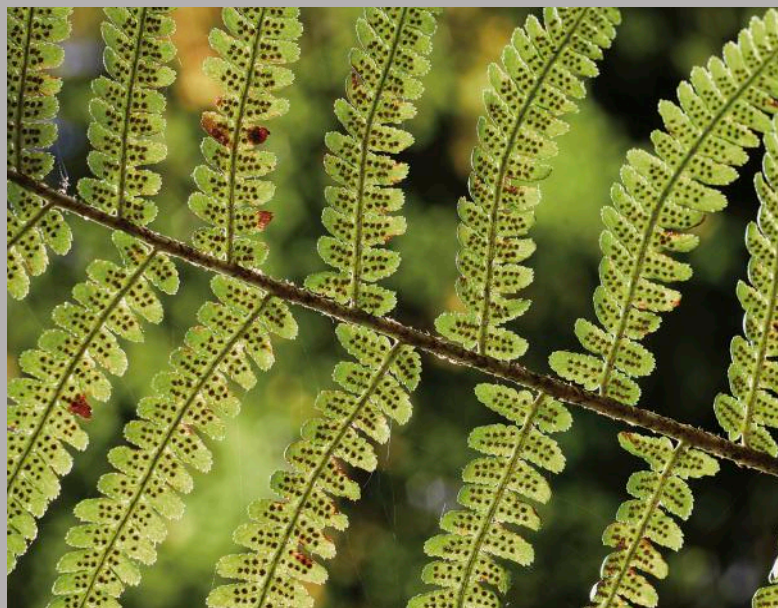


JURASSIC SSIC PARK

*You sail
Through resinous stream
To the origins of
Life*

MODEL AMBER





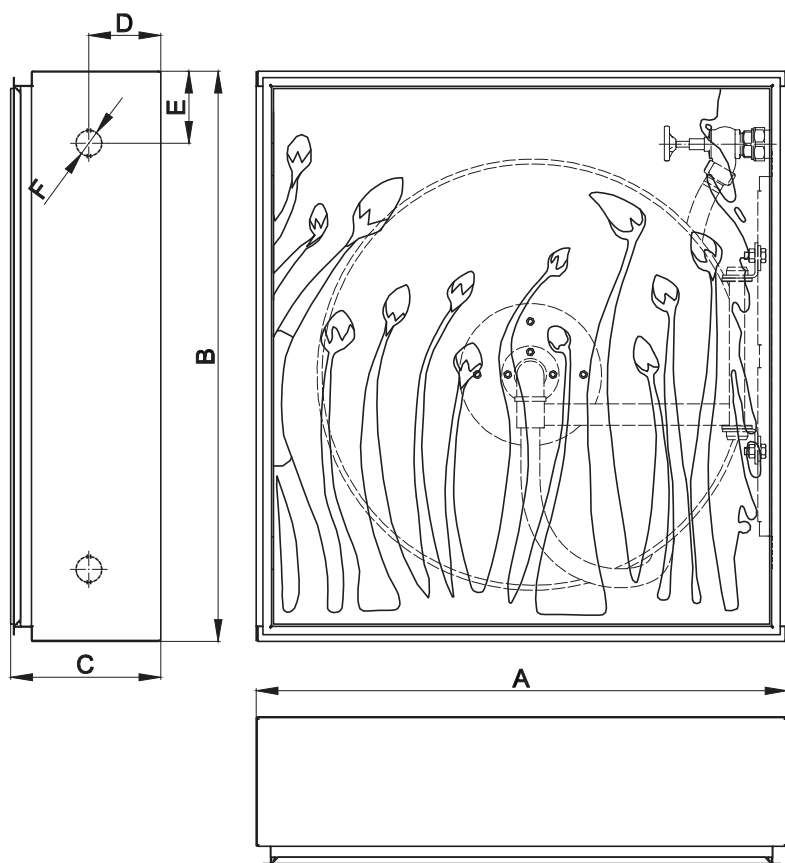


The indoor hydrant HW-19/25N-20/30 **AMBER**

An indispensable element of a modern space and natural beauty. The most important decorative motif of this cabinet is a low relief which is fixed into the frames of stainless steel sheet. The low relief in oak wood made by artist's chisel shows tulips which flower buds are made of white and yellow natural amber (also with inclusions) and flowers' bottom made of oxidized silver. The low relief may show any motif indicated by the client.



HW-19W-20/30 AMBER
HW-25W-20/30 AMBER



Model AMBER

Type: HW-19N-20/30 and HW-25N-20/30

The indoor hydrant for a semi-rigid hose DN19 or DN25.

Sort: recessed (wall niche-mounted) "W".

Connection of water supply: back of cabinet.

Sort of lock: magnetic

Cabinet's material: stainless steel.

Materials used: natural wood, amber, silver

Working pressure: minimum: 0.2 MPa.
maximum: 1.2 MPa.

Output: (Q Nom = 60 l/min for DN25 model):

$P \geq 0.2$ MPa coefficient $K = 44$ ($\varnothing 10$ mm fire hose nozzle).

$P \geq 0.4$ MPa coefficient $K = 30.5$ ($\varnothing 8$ mm fire hose nozzle).

$P \geq 0.6$ MPa coefficient $K = 26$ ($\varnothing 6$ mm fire hose nozzle).

Conformity to the norms:

EN 671-1.

Certificates:

EC Certificate of Conformity No. 1438/CPD/003

EC Certificate of Conformity No. 1438/CPD/0062

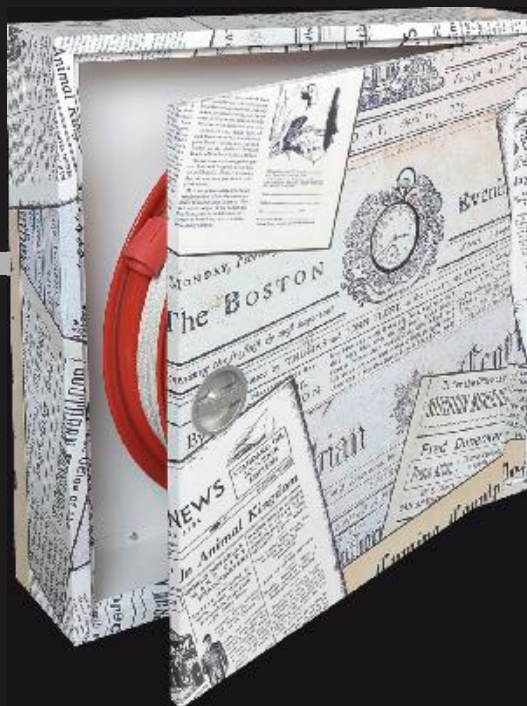
MODEL	width	height	depth	dimensions			hose type	valve	reel diametres [mm]	hose length [m]
	A [mm]	B [mm]	C [mm]	D [mm]	E [mm]	F [mm]				
HW-19W-20 AMBER	610	650	180	80	70	36	Light (white)/rubber (black)	1"	500	20
HW-19W-30 AMBER	710	750	180	80	70	36	Light (white)/rubber (black)	1"	600	30
HW-25W-20 AMBER	740	790	220	100	100	36	Light (white)	1"	500	20
HW-25W-20 AMBER	740	790	220	100	100	36	Rubber (black)	1"	600	20
HW-25W-30 AMBER	740	790	220	100	100	36	Light (white)	1"	600	30
HW-25W-30 AMBER	740	790	250	100	100	36	Rubber (black)	1"	600	30
HW-25W-20 AMBER	740	840	250	100	100	72	Light (white)	2"	500	20
HW-25W-20 AMBER	740	840	250	100	100	72	Rubber (black)	2"	500	20
HW-25W-30 AMBER	740	840	250	100	100	72	Light (white)	2"	500	30
HW-25W-30 AMBER	740	840	250	100	100	72	Rubber (black)	2"	600	30



CITIZEN KANE

*Rustle of thoughts
Puff of feelings
Creation powers of
Self-creation*

MODEL LABEL





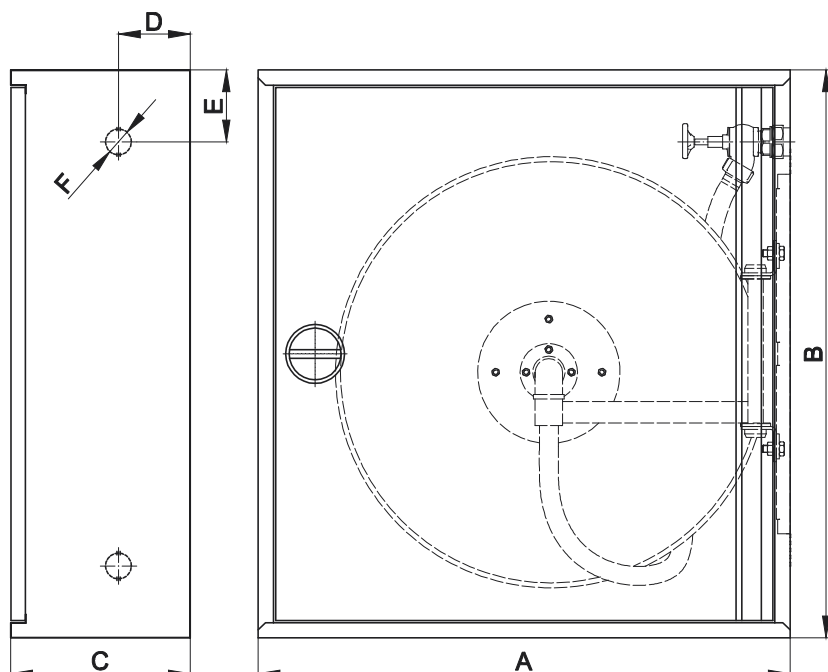


The indoor hydrant HW-19/25N-20/30 LABEL

Possibility of individual integration into the character of firm activities. The presented model renders the atmosphere of editorial office, publishing house or library very well. The cabinet is covered with a foil with any motif according to client's suggestions. The interior of the body painted in any color within the RAL palette.



HW-19N-20/30 LABEL
HW-25N-20/30 LABEL



Model LABEL

Type: HW-19N-20/30 and HW-25N-20/30

The indoor hydrant for a semi-rigid hose DN19 or DN25.

Sort: suspended (wall-mounted) "N".

Connection of water supply: back of cabinet.

Sort of lock: EURO – rotating, recessed door handle

Cabinet's material: electrolytically galvanized steel.

Working pressure: minimum: 0.2 MPa.
maximum: 1.2 MPa.

Output: (Q Nom = 60 l/min for DN25 model):
 $P \geq 0.2$ MPa coefficient $K = 44$ ($\varnothing 10$ mm fire hose nozzle).
 $P \geq 0.4$ MPa coefficient $K = 30.5$ ($\varnothing 8$ mm fire hose nozzle).
 $P \geq 0.6$ MPa coefficient $K = 26$ ($\varnothing 6$ mm fire hose nozzle).

Conformity to the norms:

EN 671-1.

Certificates:

EC Certificate of Conformity No. 1438/CPD/004,
EC Certificate of Conformity No. 1438/CPD/0063.

MODEL	width	height	depth	dimensions			hose type	valve	reel diametres [mm]	hose length [m]
	A [mm]	B [mm]	C [mm]	D [mm]	E [mm]	F [mm]				
HW-19N-20 LABEL	610	650	170	80	70	36	Light (white)/rubber (black)	1"	500	20
HW-19N-30 LABEL	710	750	170	80	70	36	Light (white)/rubber (black)	1"	600	30
HW-25N-20 LABEL	740	790	220	100	100	36	Light (white)	1"	500	20
HW-25N-20 LABEL	740	790	220	100	100	36	Rubber (black)	1"	600	20
HW-25N-30 LABEL	740	790	220	100	100	36	Light (white)	1"	600	30
HW-25N-30 LABEL	740	790	250	100	100	36	Rubber (black)	1"	600	30
HW-25N-20 LABEL	740	840	250	100	100	72	Light (white)	2"	500	20
HW-25N-20 LABEL	740	840	250	100	100	72	Rubber (black)	2"	500	20
HW-25N-30 LABEL	740	840	250	100	100	72	Light (white)	2"	500	30
HW-25N-30 LABEL	740	840	250	100	100	72	Rubber (black)	2"	600	30



THE SECRET GARDEN



*Open this gate
You will flourish
With mystical colors
line*

MODEL WOOD





MODEL WOOD





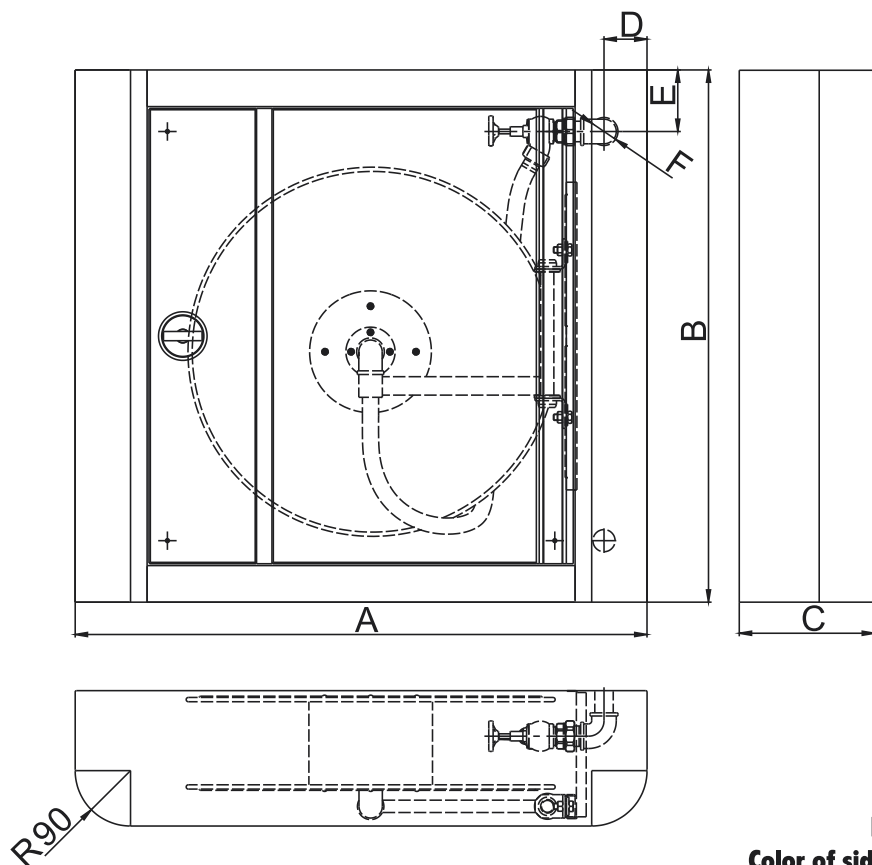
Standard wooden ornaments (to choose from) and full freedom in monochromatic graphics on the door.

The indoor hydrant HW-19/25N-20/30 **WOOD**

An exceptional combination of stainless steel, wood and laser engraved graphic. In order to make the cabinet become an element of an interior decor and give it an individual character, there is the possibility of placing your own unique design on the door. The color and kind of wood can be selected in accordance with an architect's instructions.



HW-19N-20/30 WOOD
HW-25N-20/30 WOOD



Model WOOD

Type: HW-19N-20/30 and HW-25N-20/30

The indoor hydrant for a semi-rigid hose DN19 or DN25.

Sort: suspended (wall-mounted) "N".

Connection of water supply: back of cabinet.

Sort of lock: magnetic with a stainless steel door handle or EURO – rotating, recessed door handle.

Color of side wooden beams: according to standard patterns or individually chosen.

Cabinet's material: stainless steel (standard).

Working pressure: minimum of 0.2 MPa
maximum of 1.2 MPa.

Output: (Q Nom = 60 l/min for DN25 model):

$P \geq 0.2$ MPa coefficient $K = 44$ ($\varnothing 10$ mm fire hose nozzle).

$P \geq 0.4$ MPa coefficient $K = 30.5$ ($\varnothing 8$ mm fire hose nozzle).

$P \geq 0.6$ MPa coefficient $K = 26$ ($\varnothing 6$ mm fire hose nozzle).

The hydrant can be in a version of horizontal arrangement for an extinguisher.

Conformity to the norms:

EN 671-1.

Certificates:

EC Certificate of Conformity No. 1438/CPD/004,

EC Certificate of Conformity No. 1438/CPD/0063.

MODEL	width	height	depth	dimensions			hose type	valve	reel diametres [mm]	hose length [m]
	A [mm]	B [mm]	C [mm]	D [mm]	E [mm]	F [mm]				
HW-19N-20 WOOD	930	865	180	70	100	72	Light (white)/rubber (black)	1"	500	20
HW-19N-30 WOOD	930	865	180	70	100	72	Light (white)/rubber (black)	1"	600	30
HW-25N-20 WOOD	930	865	220	70	100	72	Light (white)	1"	500	20
HW-25N-30 WOOD	930	865	220	70	100	72	Rubber (black)	1"	600	20
HW-25N-30 WOOD	930	865	220	70	100	72	Light (white)	1"	600	30
HW-25N-30 WOOD	930	865	250	70	100	72	Rubber (black)	1"	600	30
HW-25N-20 WOOD	930	915	250	70	100	90	Light (white)	2"	500	20
HW-25N-20 WOOD	930	915	250	70	100	90	Rubber (black)	2"	500	20
HW-25N-30 WOOD	930	915	250	70	100	90	Light (white)	2"	500	30
HW-25N-30 WOOD	930	915	250	70	100	90	Rubber (black)	2"	600	30

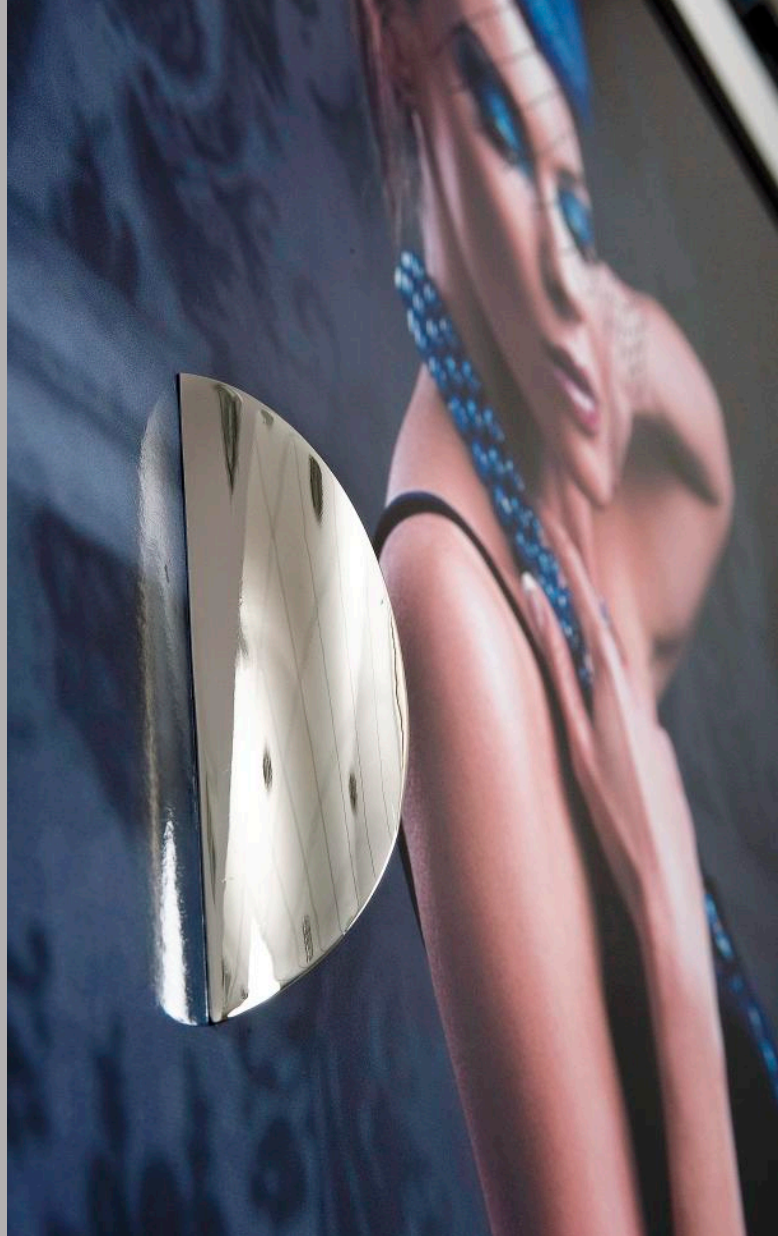


GREAT GAT SBY

*From the stream of reverie
Shell of desires
Born
Career pearl*

MODEL PICTURE





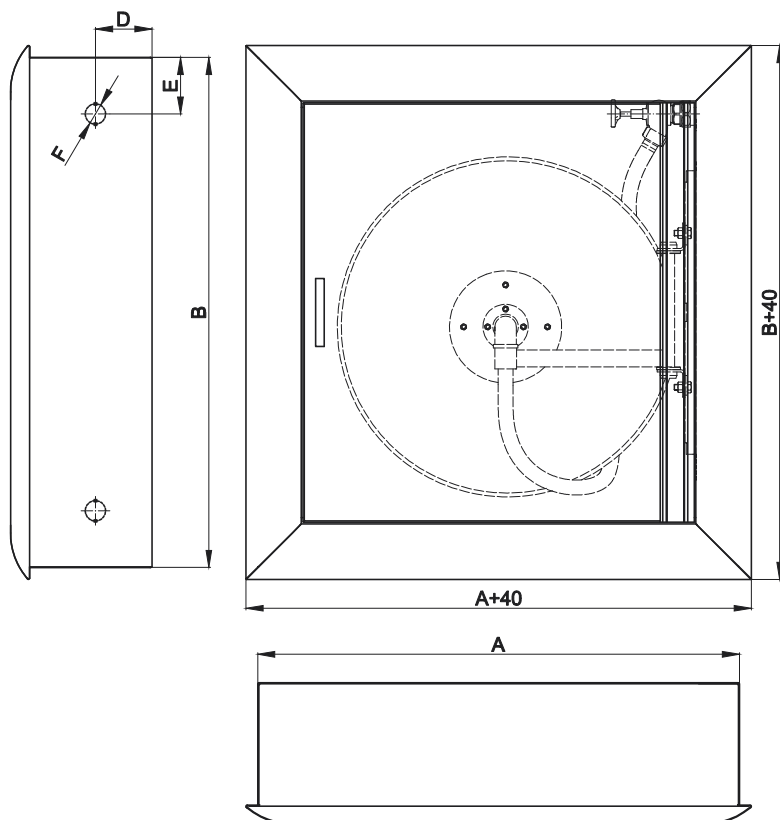


The indoor hydrant HW-19/25W-20/30 **PICTURE**

A dream essence of personal taste and esthetic preferences. The door of the cabinet covered with any graphic according to client's suggestions which is framed in the bended elaborately frames. The body of the cabinet painted with metallic structural paint.



HW-19W-20/30 PICTURE
HW-25W-20/30 PICTURE



Model PICTURE

Type: HW-19N-20/30 and HW-25W-20/30

The indoor hydrant for a semi-rigid hose DN19 or DN25.

Sort: recessed (wall niche-mounted) "W".

Connection of water supply: back of cabinet.

Sort of lock: magnetic.

Color of cabinet's body: any matt lacquer within the RAL palette.

Cabinet's material: electrolytically galvanized steel.

Working pressure: minimum: 0.2 MPa, maximum: 1.2 MPa.

Output: (Q Nom = 60 l/min for DN25 model):

$P \geq 0.2$ MPa coefficient $K = 44$ ($\varnothing 10$ mm fire hose nozzle).

$P \geq 0.4$ MPa coefficient $K = 30.5$ ($\varnothing 8$ mm fire hose nozzle).

$P \geq 0.6$ MPa coefficient $K = 26$ ($\varnothing 6$ mm fire hose nozzle).

The hydrant can be in a version of horizontal arrangement for an extinguisher.

Conformity to the norms:

EN 671-1.

Certificates:

EC Certificate of Conformity No. 1438/CPD/003,

EC Certificate of Conformity No. 1438/CPD/0062.

MODEL	width	height	depth	dimensions			hose type	valve	reel diametres [mm]	hose length [m]
	A [mm]	B [mm]	C [mm]	D [mm]	E [mm]	F [mm]				
HW-19W-20 PICTURE	850	900	180	100	80	36	Light (white)/rubber (black)	1"	500	20
HW-19W-30 PICTURE	850	900	180	100	80	36	Light (white)/rubber (black)	1"	600	30
HW-25W-20 PICTURE	850	900	220	100	80	36	Light (white)	1"	500	20
HW-25W-20 PICTURE	850	900	220	100	80	36	Rubber (black)	1"	600	20
HW-25W-30 PICTURE	850	900	220	100	80	36	Light (white)	1"	600	30
HW-25W-30 PICTURE	850	900	250	100	80	36	Rubber (black)	1"	600	30
HW-25W-20 PICTURE	850	1020	250	100	100	72	Light (white)	2"	500	20
HW-25W-20 PICTURE	850	1020	250	100	100	72	Rubber (black)	2"	500	20
HW-25W-30 PICTURE	850	1200	250	100	100	72	Light (white)	2"	500	30
HW-25W-30 PICTURE	850	1020	250	100	100	72	Rubber (black)	2"	600	30



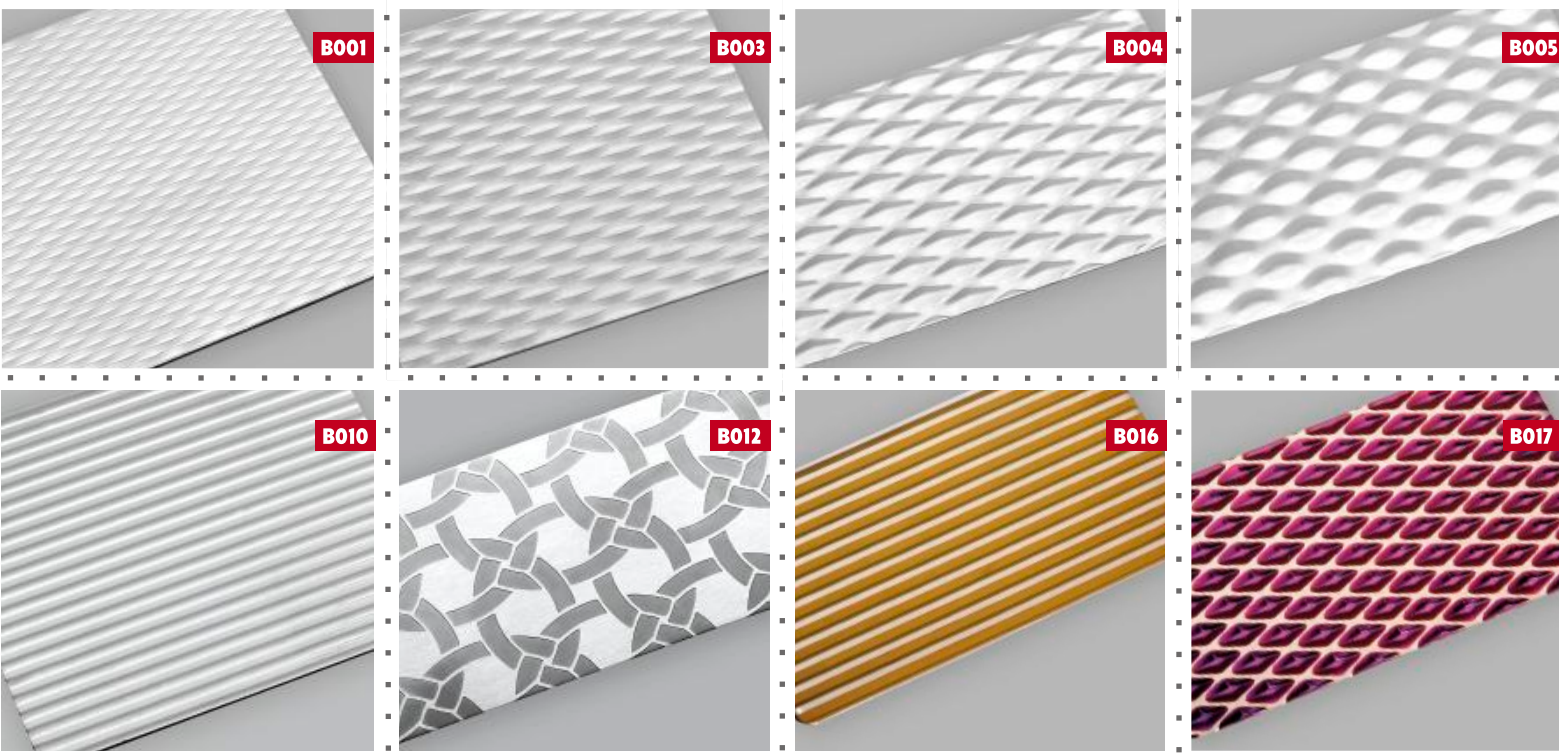
ALICE THROUGH THE LOOKING GLASS

*Fairy tale in the mirror
The height of your
Soul
In reflection*

MODEL MIRROR







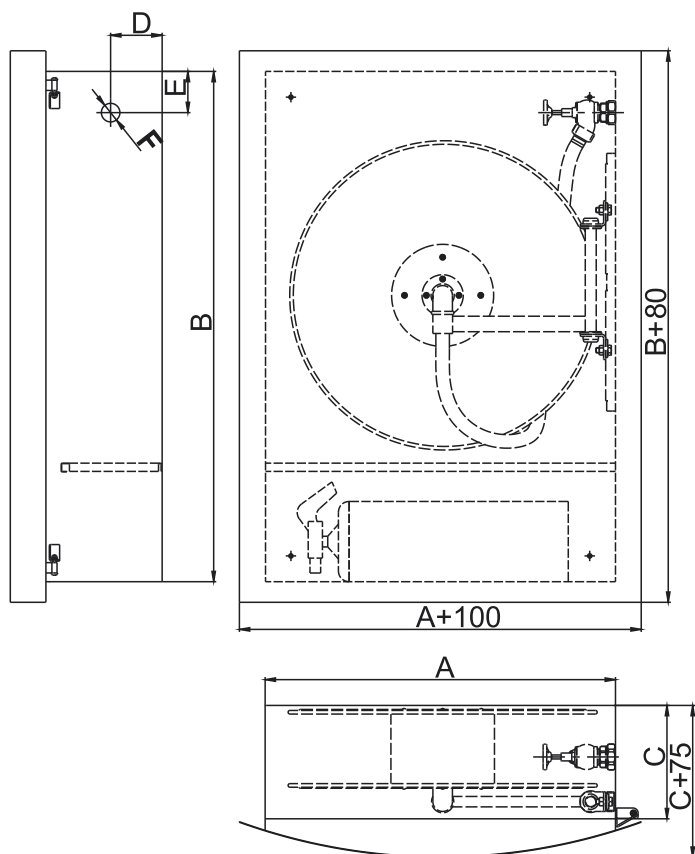
Selected patterns of stainless sheets as an optional material for cabinet's body.

The indoor hydrant HW-19/25N-KP-20/30 MIRROR

The mirror surface of the door that is made of stainless steel, so popular nowadays in modern interiors. A reflection in the door excellently becomes a part of the environment and thanks to that you may eliminate the selection of door color to fit the interior.



HW-19N-KP-20/30 MIRROR
HW-25N-KP-20/30 MIRROR



Model MIRROR

Type: HW-19N-KP-20/30 and HW-25N-KP-20/30

The indoor hydrant for a semi-rigid hose DN19 or DN25 with a horizontal arrangement for an extinguisher.

Sort: suspended (wall-mounted) "N".

Connection of water supply: side or back of cabinet.

Sort of lock: magnetic.

Color of cabinet's body: within the RAL palette (standard) or made of stainless steel.

Working pressure: minimum: 0.2 MPa maximum: 1.2 MPa.

Output: (Q Nom = 60 l/min for DN25 model):
 $P \geq 0.2$ MPa coefficient $K = 44$ ($\varnothing 10$ mm fire hose nozzle).
 $P \geq 0.4$ MPa coefficient $K = 30.5$ ($\varnothing 8$ mm fire hose nozzle).
 $P \geq 0.6$ MPa coefficient $K = 26$ ($\varnothing 6$ mm fire hose nozzle).

The hydrant can be in a version of non-horizontal arrangement for an extinguisher.

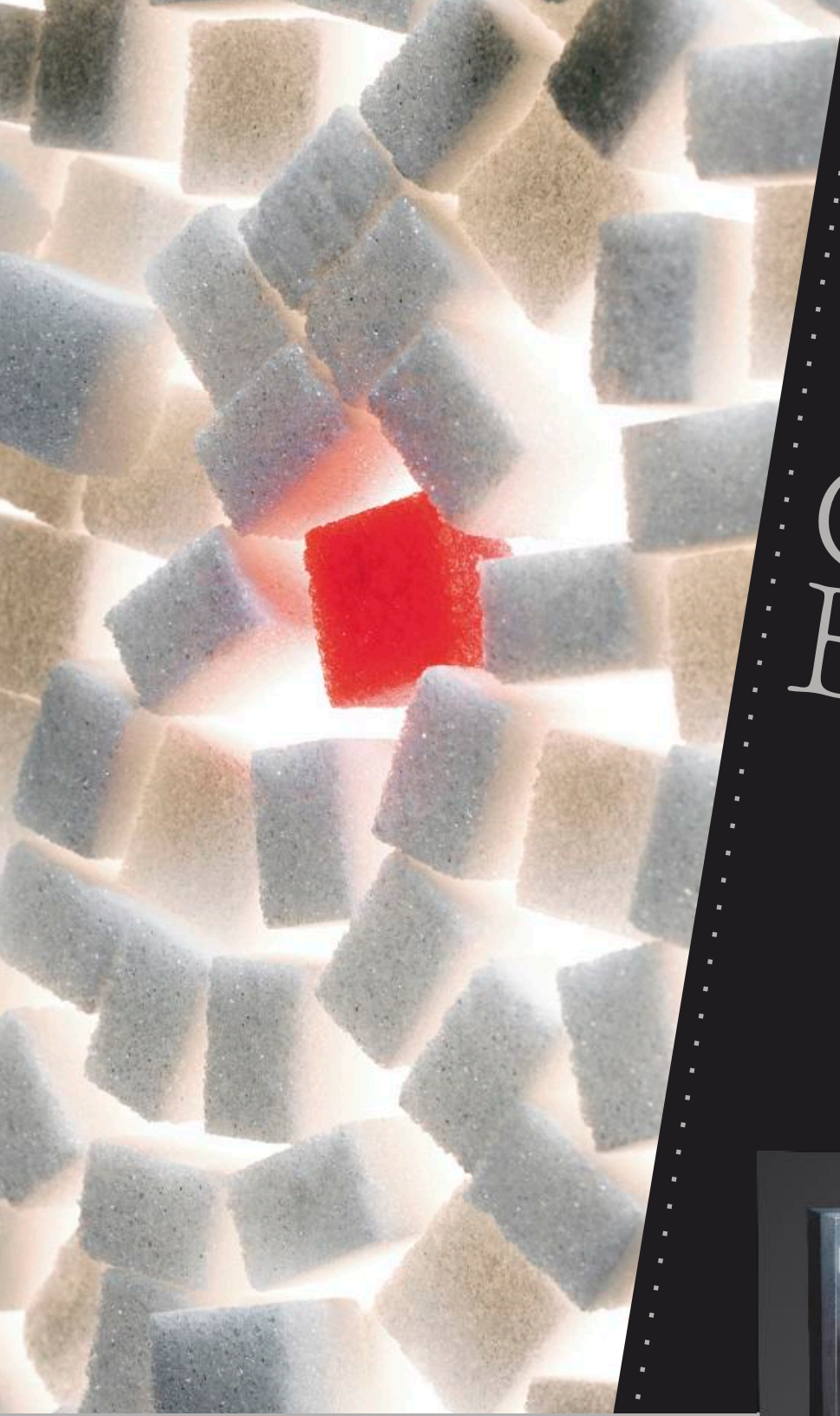
Conformity to the norms:

EN 671-1.

Certificates:

EC Certificate of Conformity No. 1438/CPD/004,
 EC Certificate of Conformity No. 1438/CPD/0063.

MODEL	width	height	depth	dimensions			hose type	valve	reel diametres [mm]	hose length [m]
	A [mm]	B [mm]	C [mm]	D [mm]	E [mm]	F [mm]				
HW-19N-KP 20 MIRROR	680	990	170	80	70	36	Light (white)/rubber (black)	1"	500	20
HW-19N-KP 30 MIRROR	680	990	170	80	70	36	Light (white)/rubber (black)	1"	600	30
HW-25N-KP 20 MIRROR	680	990	220	110	100	36	Light (white)	1"	500	20
HW-25N-KP 20 MIRROR	680	990	220	110	100	36	Rubber (black)	1"	600	20
HW-25N-KP 30 MIRROR	680	990	220	110	100	36	Light (white)	1"	600	30
HW-25N-KP 30 MIRROR	680	990	250	110	100	36	Rubber (black)	1"	600	30
HW-25N-KP 20 MIRROR	680	1040	220	110	100	72	Light (white)	2"	500	20
HW-25N-KP 20 MIRROR	680	1040	220	110	100	72	Rubber (black)	2"	600	20
HW-25N-KP 30 MIRROR	680	1040	220	110	100	72	Light (white)	2"	600	30
HW-25N-KP 30 MIRROR	680	1040	250	110	100	72	Rubber (black)	2"	600	30

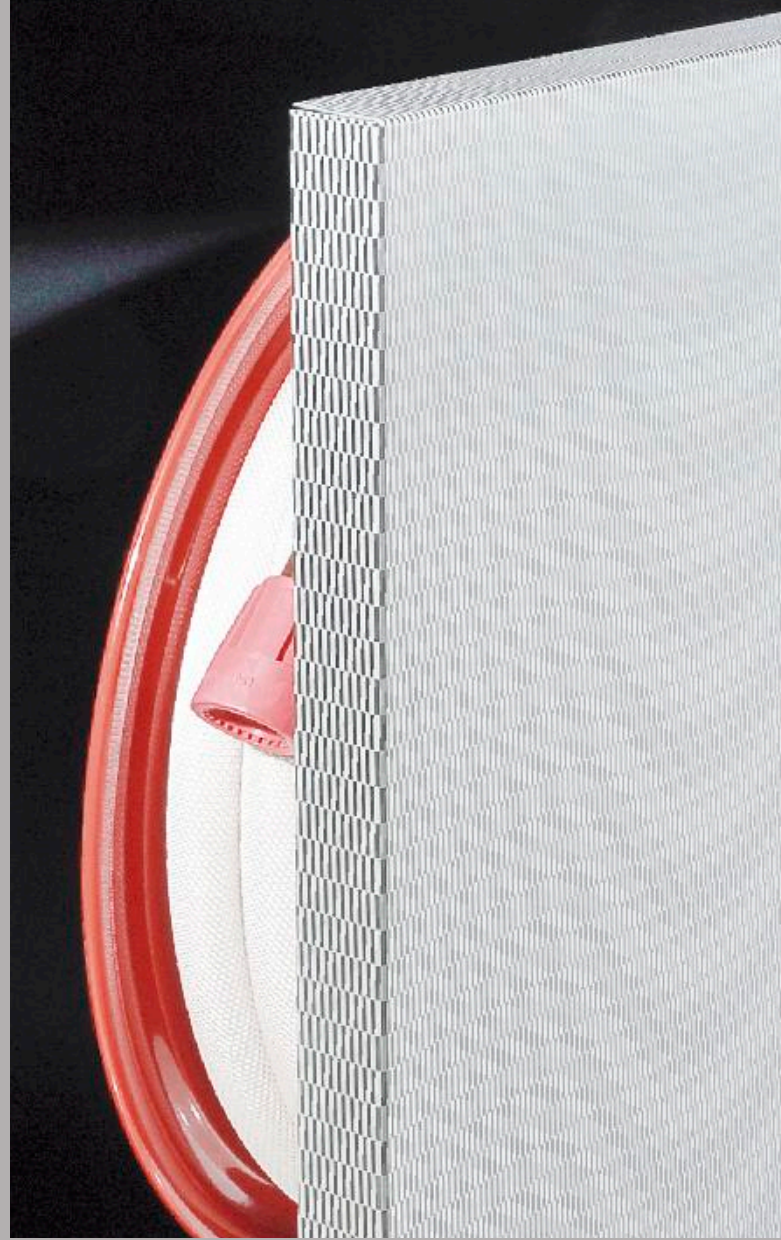


CUBE

*From million of shapes of
Secret structures
Intertwined
Net of existence*

MODEL LACOBEL





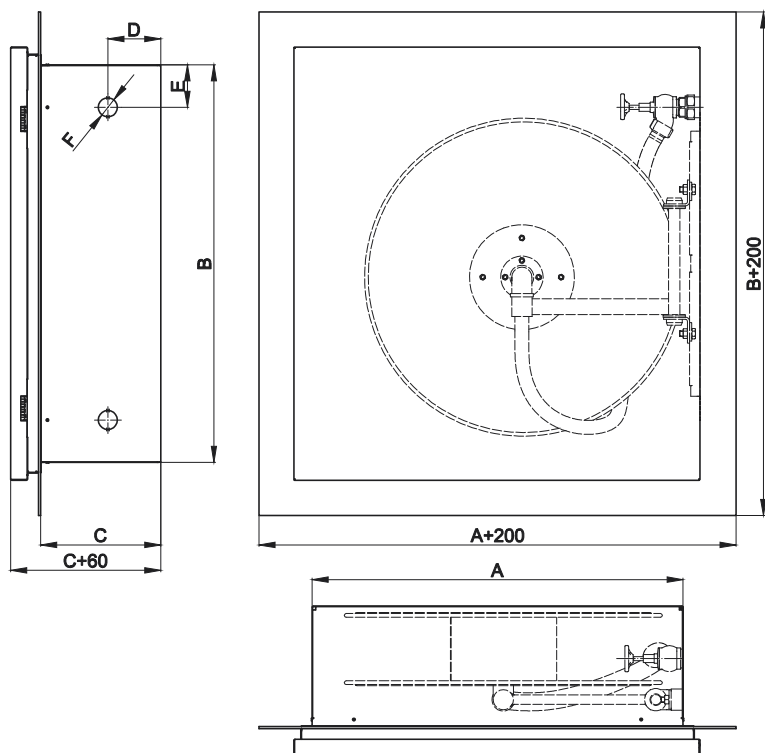


The indoor hydrant HW-19/25W-20/30 LACOBEL
The model with a LED flashing

A subtle penetration into a structure of modernity. The recessed cabinet with a glass frame in any available color within the RAL palette, with the door made of high quality decorative stainless steel (pattern of sheet to be chosen form the offer of the GRAS firm). The body of the cabinet painted with structural paint. The possibility of fixing of LED flashing operated by a remote control.



HW-19N-20/30 LACOBEL
 HW-25N-20/30 LACOBEL



Model LACOBEL

Type: HW-19W-20/30 and HW-25W-20/30

The indoor hydrant for a semi-rigid hose DN19 or DN25.

Sort: recessed (wall niche-mounted) "W".

Connection of water supply: back of cabinet.

Sort of lock: magnetic.

Cabinet's material: electrolytically galvanized steel, stainless steel, stained glass

Working pressure: minimum: 0.2 MPa
maximum: 1.2 MPa.

Output: (Q Nom = 60 l/min for DN25 model):

$P \geq 0.2$ MPa coefficient $K = 44$ ($\varnothing 10$ mm fire hose nozzle).

$P \geq 0.4$ MPa coefficient $K = 30.5$ ($\varnothing 8$ mm fire hose nozzle).

$P \geq 0.6$ MPa coefficient $K = 26$ ($\varnothing 6$ mm fire hose nozzle).

The hydrant can be in a version of horizontal arrangement for an extinguisher.

Conformity to the norms:

EN 671-1.

Certificates:

EC Certificate of Conformity No. 1438/CPD/003,

EC Certificate of Conformity No. 1438/CPD/0062.

MODEL	width	height	depth	dimensions			hose type	valve	reel diametres [mm]	hose length [m]
	A [mm]	B [mm]	C [mm]	D [mm]	E [mm]	F [mm]				
HW-19W-20 LACOBEL	700	750	170	100	80	36	Light (white)/rubber (black)	1"	500	20
HW-19W-30 LACOBEL	700	750	170	100	80	36	Light (white)/rubber (black)	1"	600	30
HW-25W-20 LACOBEL	700	750	220	100	80	36	Light (white)	1"	500	20
HW-25W-20 LACOBEL	700	750	220	100	80	36	Rubber (black)	1"	600	20
HW-25W-30 LACOBEL	700	750	220	100	80	36	Light (white)	1"	600	30
HW-25W-30 LACOBEL	700	750	250	100	80	36	Rubber (black)	1"	600	30
HW-25W-20 LACOBEL	700	800	250	100	100	72	Light (white)	2"	500	20
HW-25W-20 LACOBEL	700	800	250	100	100	72	Rubber (black)	2"	600	20
HW-25W-30 LACOBEL	700	800	250	100	100	72	Light (white)	2"	600	30
HW-25W-30 LACOBEL	700	800	250	100	100	72	Rubber (black)	2"	600	30

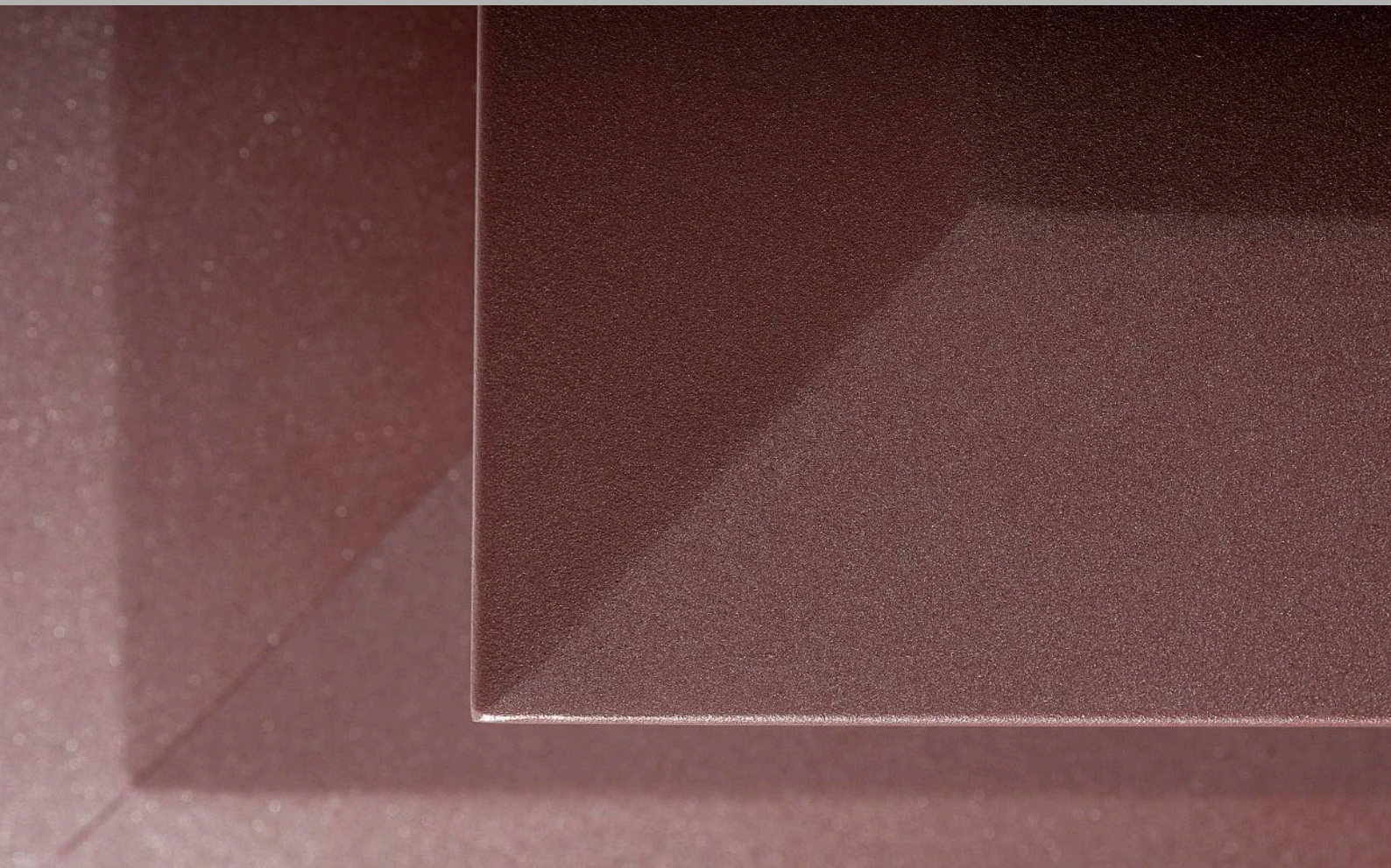


CHOCOLATE



*Scorching lively dance of
Sensory hope
Enticing with
Lazy bliss*

MODEL EDGE



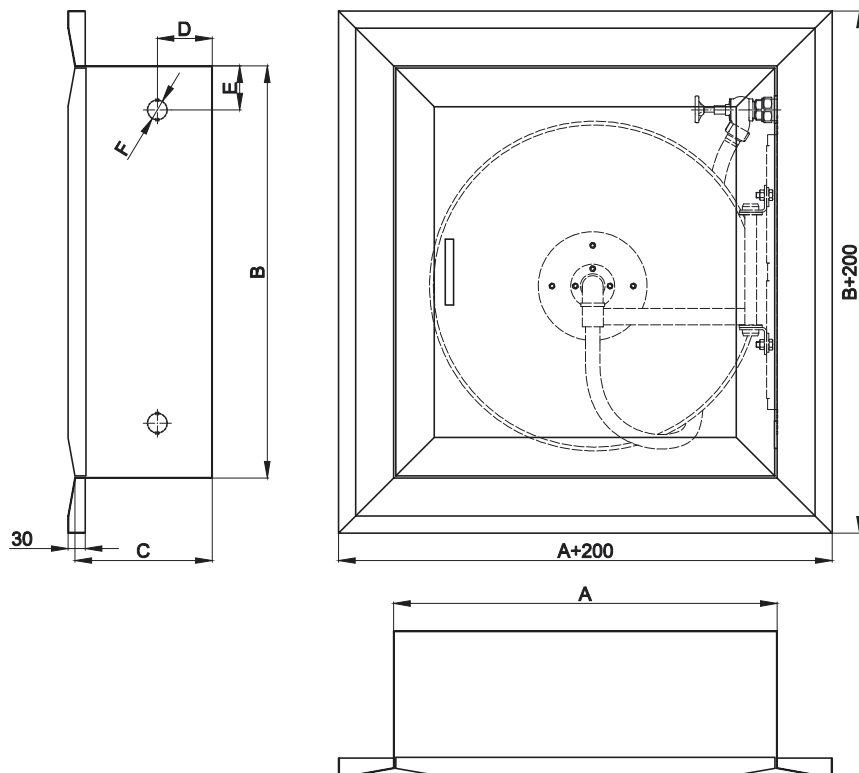


The indoor hydrant **HW-19/25W-20/30 EDGE**

An impulse for imagination and inner calm. The cabinet of untypical bending, it looks like a bar of chocolate, covered completely with metallic structural paint.



HW-19W-20/30 EDGE
HW-25W-20/30 EDGE



Model EDGE

Type: HW-19W-20/30 and HW-25W-20/30

The indoor hydrant for a semi-rigid hose DN19 or DN25.

Sort: recessed (wall niche-mounted) "W".

Connection of water supply: back of cabinet.

Sort of lock: magnetic with a handle.

Cabinet's material: electrolytically galvanized steel.

Working pressure: minimum: 0.2 MPa
maximum: 1.2 MPa.

Output: (Q Nom = 60 l/min for DN25 model):
 $P \geq 0.2$ MPa coefficient $K = 44$ ($\varnothing 10$ mm fire hose nozzle).
 $P \geq 0.4$ MPa coefficient $K = 30.5$ ($\varnothing 8$ mm fire hose nozzle).
 $P \geq 0.6$ MPa coefficient $K = 26$ ($\varnothing 6$ mm fire hose nozzle).

Conformity to the norms:

EN 671-1.

Certificates:

EC Certificate of Conformity No. 1438/CPD/003,
EC Certificate of Conformity No. 1438/CPD/0062.

MODEL	width	height	depth	dimensions			hose type	valve	reel diametres [mm]	hose length [m]
	A [mm]	B [mm]	C [mm]	D [mm]	E [mm]	F [mm]				
HW-19W-20 EDGE	700	750	170	100	80	36	Light (white)/rubber (black)	1"	500	20
HW-19W-30 EDGE	700	750	170	100	80	36	Light (white)/rubber (black)	1"	600	30
HW-25W-20 EDGE	700	750	220	100	80	36	Light (white)	1"	500	20
HW-25W-20 EDGE	700	750	220	100	80	36	Rubber (black)	1"	600	20
HW-25W-30 EDGE	700	750	220	100	80	36	Light (white)	1"	600	30
HW-25W-30 EDGE	700	750	250	100	80	36	Rubber (black)	1"	600	30
HW-25W-20 EDGE	700	800	250	100	100	72	Light (white)	2"	500	20
HW-25W-20 EDGE	700	800	250	100	100	72	Rubber (black)	2"	600	20
HW-25W-30 EDGE	700	800	250	100	100	72	Light (white)	2"	600	30
HW-25W-30 EDGE	700	800	250	100	100	72	Rubber (black)	2"	600	30

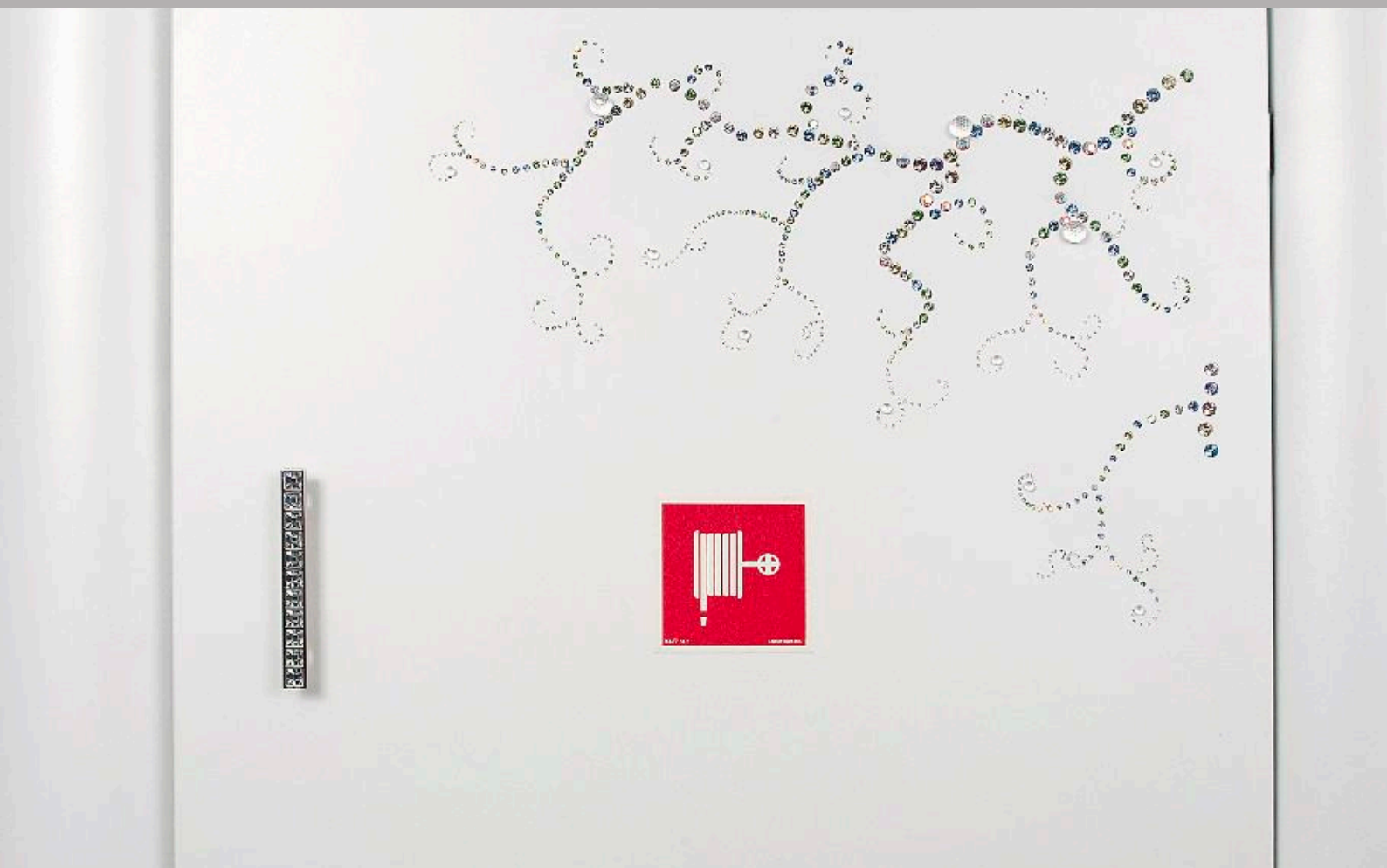
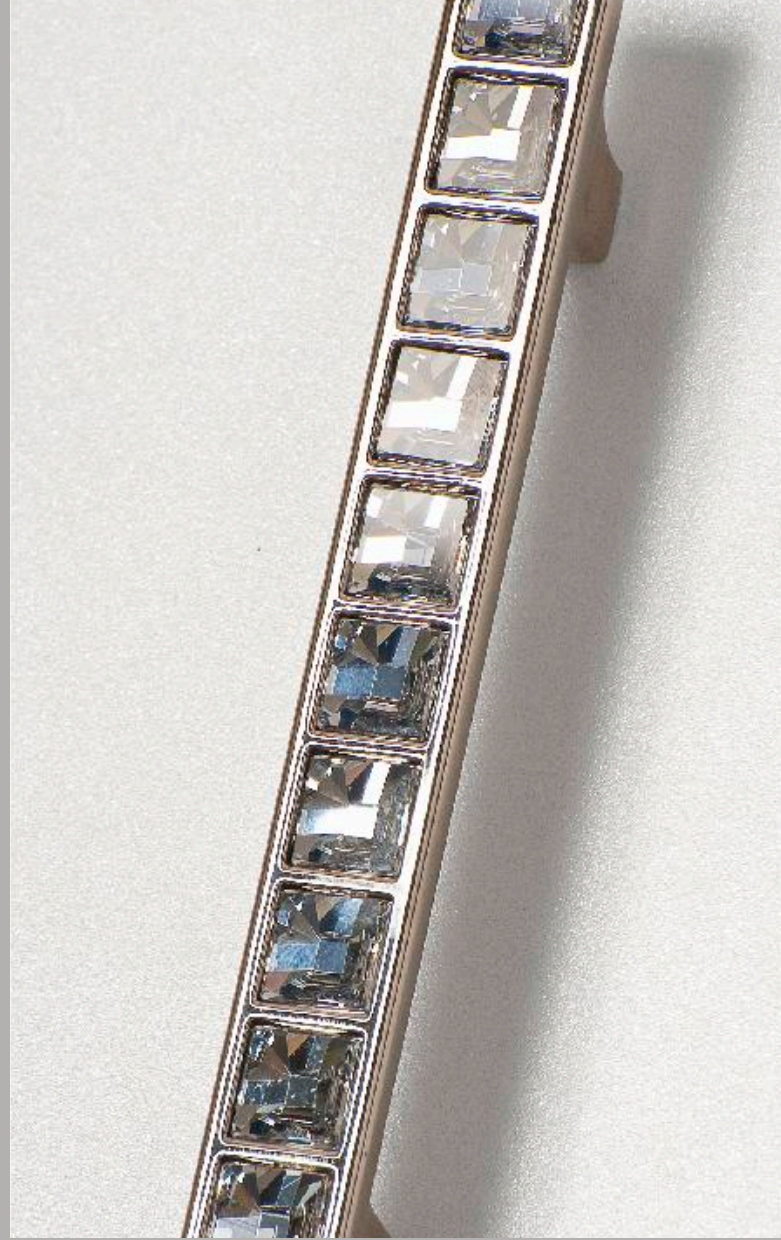
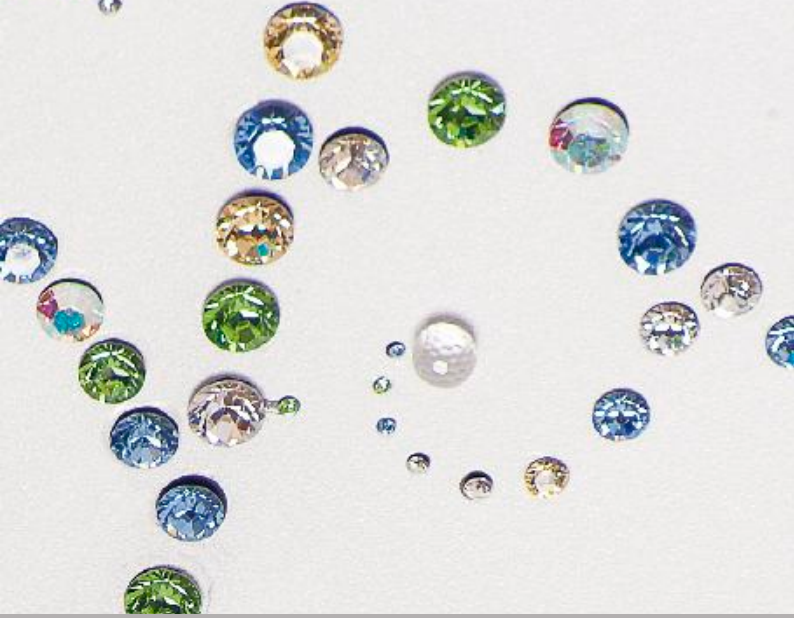


THE DIA MONDS ARE FOR EVER



*Rainbow world
Hidden in
Immortal
Gleam*

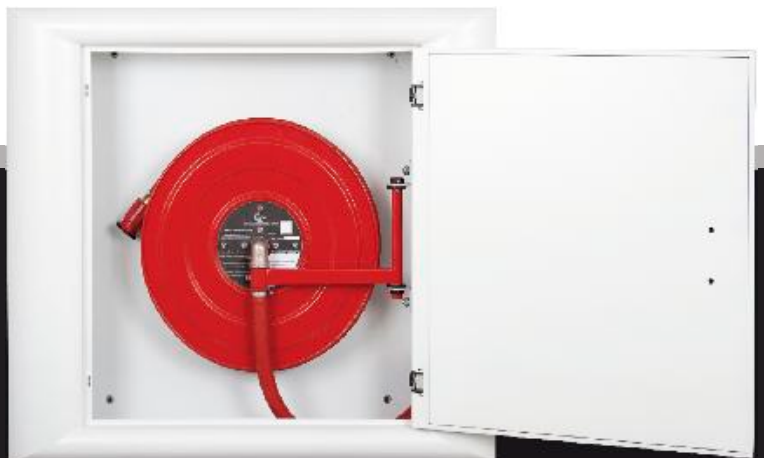
MODEL CRYSTAL



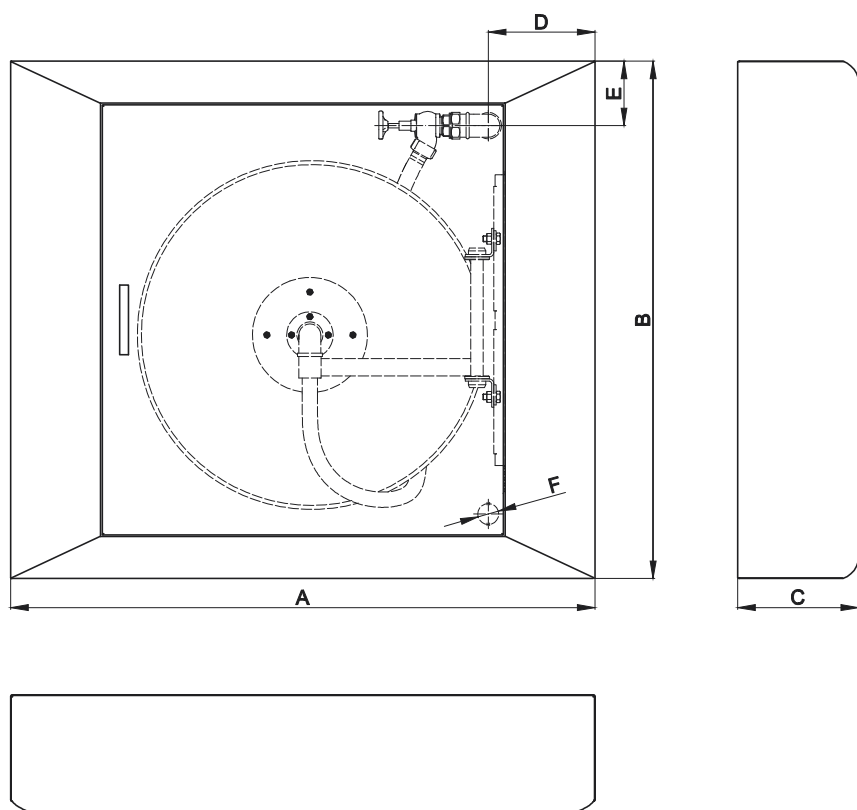


The indoor hydrant **HW-19/25N-20/30 CRYSTAL**

A real diamond in a luxurious and elegant interior. Your attention is attracted by any motif on the cabinet's door (possibility of having it on the body, too) according to client's suggestions, which is set with Swarovski crystals. The whole located in a bended masterfully body which is painted with pearl, structural paint.



HW-19N-20/30 CRYSTAL
HW-25N-20/30 CRYSTAL



Model CRYSTAL

Type: HW-19N-20/30 and HW-25W-20/30

The indoor hydrant for a semi-rigid hose DN19 or DN25.

Sort: suspended (wall-mounted) "N".

Connection of water supply: back of cabinet.

Sort of lock: magnetic with a handle.

Materials used: Swarovski crystals

Cabinet's material: electrolytically galvanized steel.

Working pressure: minimum: 0.2 MPa
maximum: 1.2 MPa.

Output: (Q Nom = 60 l/min for DN25 model):

$P \geq 0.2$ MPa coefficient $K = 44$ ($\varnothing 10$ mm fire hose nozzle).

$P \geq 0.4$ MPa coefficient $K = 30.5$ ($\varnothing 8$ mm fire hose nozzle).

$P \geq 0.6$ MPa coefficient $K = 26$ ($\varnothing 6$ mm fire hose nozzle).

Conformity to the norms:

EN 671-1.

Certificates:

EC Certificate of Conformity No. 1438/CPD/004,

EC Certificate of Conformity No. 1438/CPD/0063.

MODEL	width	height	depth	dimensions			hose type	valve	reel diametres [mm]	hose length [m]
	A [mm]	B [mm]	C [mm]	D [mm]	E [mm]	F [mm]				
HW-19N-20 CRYSTAL	1050	980	210	180	110	36	Light (white)/rubber (black)	1"	500	20
HW-19N-30 CRYSTAL	1050	980	210	180	110	36	Light (white)/rubber (black)	1"	600	30
HW-25N-20 CRYSTAL	1050	980	250	180	110	36	Light (white)	1"	500	20
HW-25N-20 CRYSTAL	1050	980	250	180	110	36	Rubber (black)	1"	600	20
HW-25N-30 CRYSTAL	1050	980	250	180	110	36	Light (white)	1"	600	30
HW-25N-30 CRYSTAL	1050	980	280	180	110	36	Rubber (black)	1"	600	30
HW-25N-20 CRYSTAL	1050	1030	280	180	110	72	Light (white)	2"	500	20
HW-25N-20 CRYSTAL	1050	1030	280	180	110	72	Rubber (black)	2"	600	20
HW-25N-30 CRYSTAL	1050	1030	280	180	110	72	Light (white)	2"	600	30
HW-25N-30 CRYSTAL	1050	1030	280	180	110	72	Rubber (black)	2"	600	30

Within the continues improvement of products in accordance with the market and legal requirements the producer PPPH. GRAS reserves the right to introduce at any time construction changes of the offered hydrant cabinets without changing their general purpose.

All hydrant cabinets are sold as a final product ready for installation. Only a proper, in accordance with instructions, installation of the hydrant cabinet guarantees the safety of hydrant's use and esthetically pleasing appearance.

The presented in the catalogue offer is not an offer as defined in the Civil Code.

On account of some limits resulting from the technique of print, colors that are reproduced in the catalogue can differ from real colors of the offered products.

The hydrants which are presented in the Catalogue as well as their wokmanship are the registered designs at the Patent Office of the Republic of Poland.

THE "GRAS" PRODUCTION - TRADE PRIVATE COMPANY

77-231 KORZYBIE, 12 SŁAWIEŃSKA STREET

TEL./FAX: (+48) 59 857 73 02 (03)

e-mail: gras@gras.pl

www.gras.pl www.hydranty.pl

Design and graphic work out:

Ilona Gostyńska-Rymkiewicz (FOTECH)

Composition:

AUH Fotech, 1/2 Sienkiewicza Ave., 76-200 Słupsk

tel. (+48) 59 842 98 20

